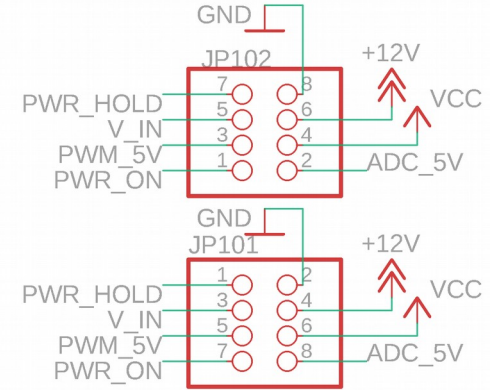
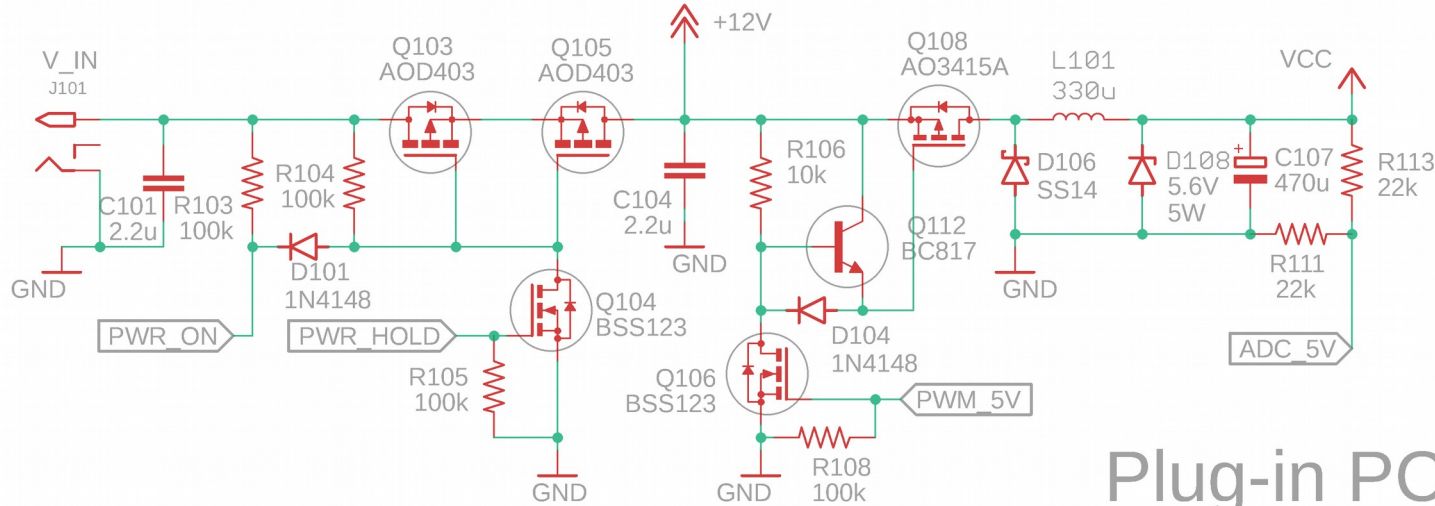
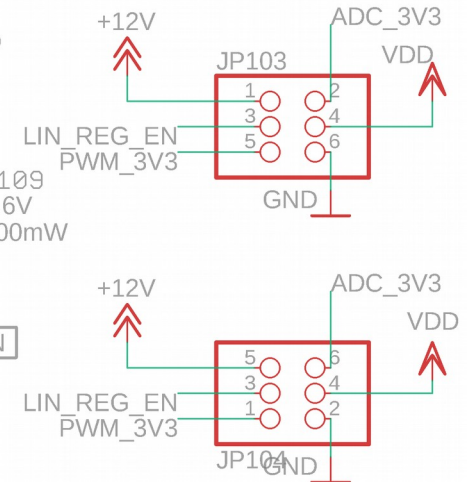
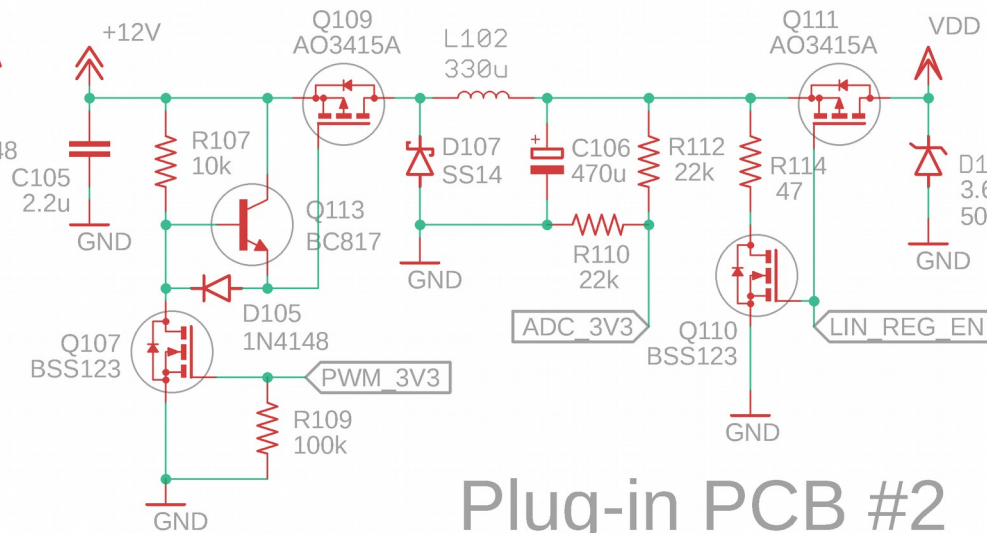
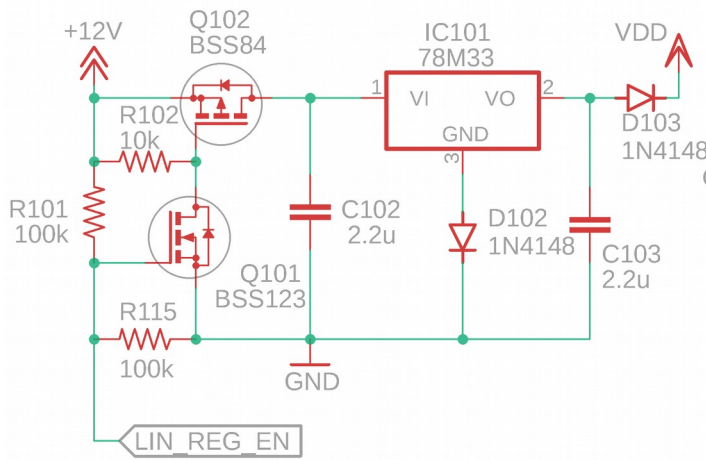


# Rev 3 PCB QMX Schematics

Note, component numbering indicates the page number of the schematics; e.g. all components numbered 1xx are on page 1 etc. R106, for example, is on schematics page 1.



## Plug-in PCB #1

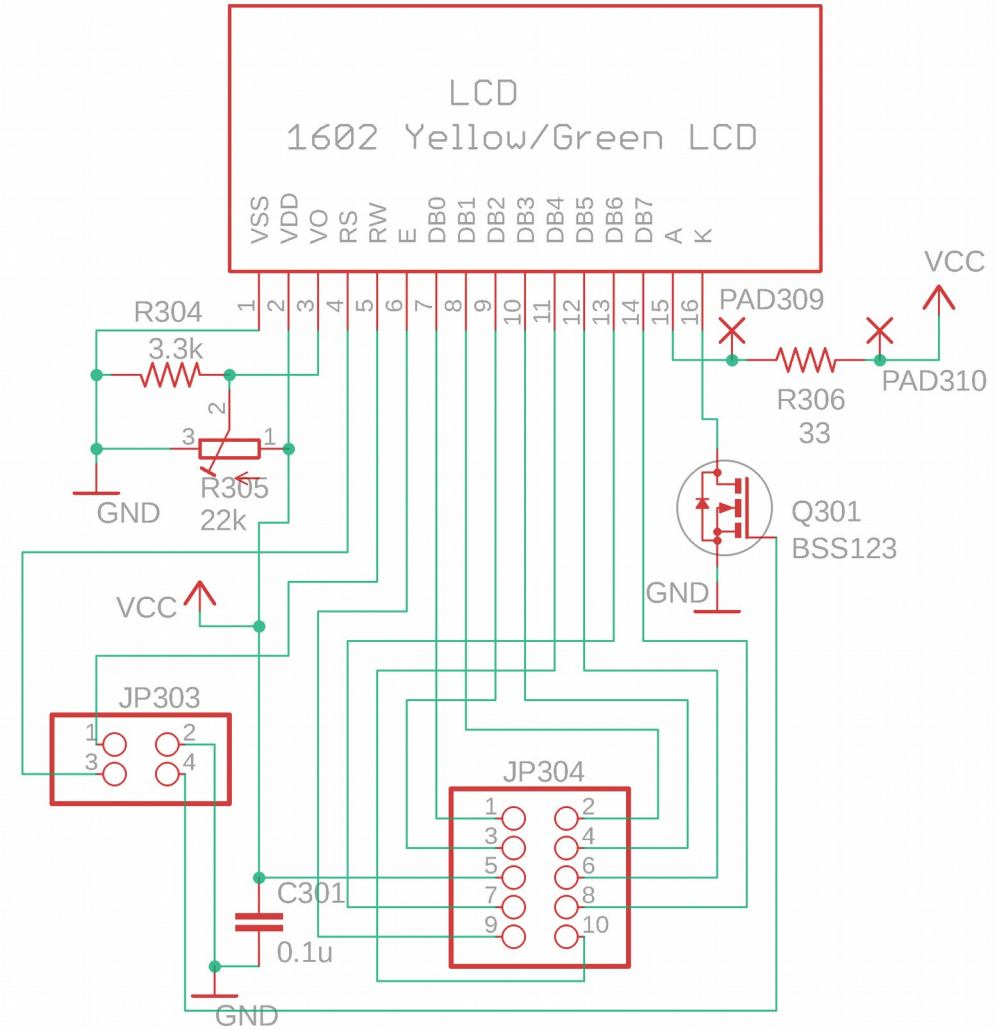
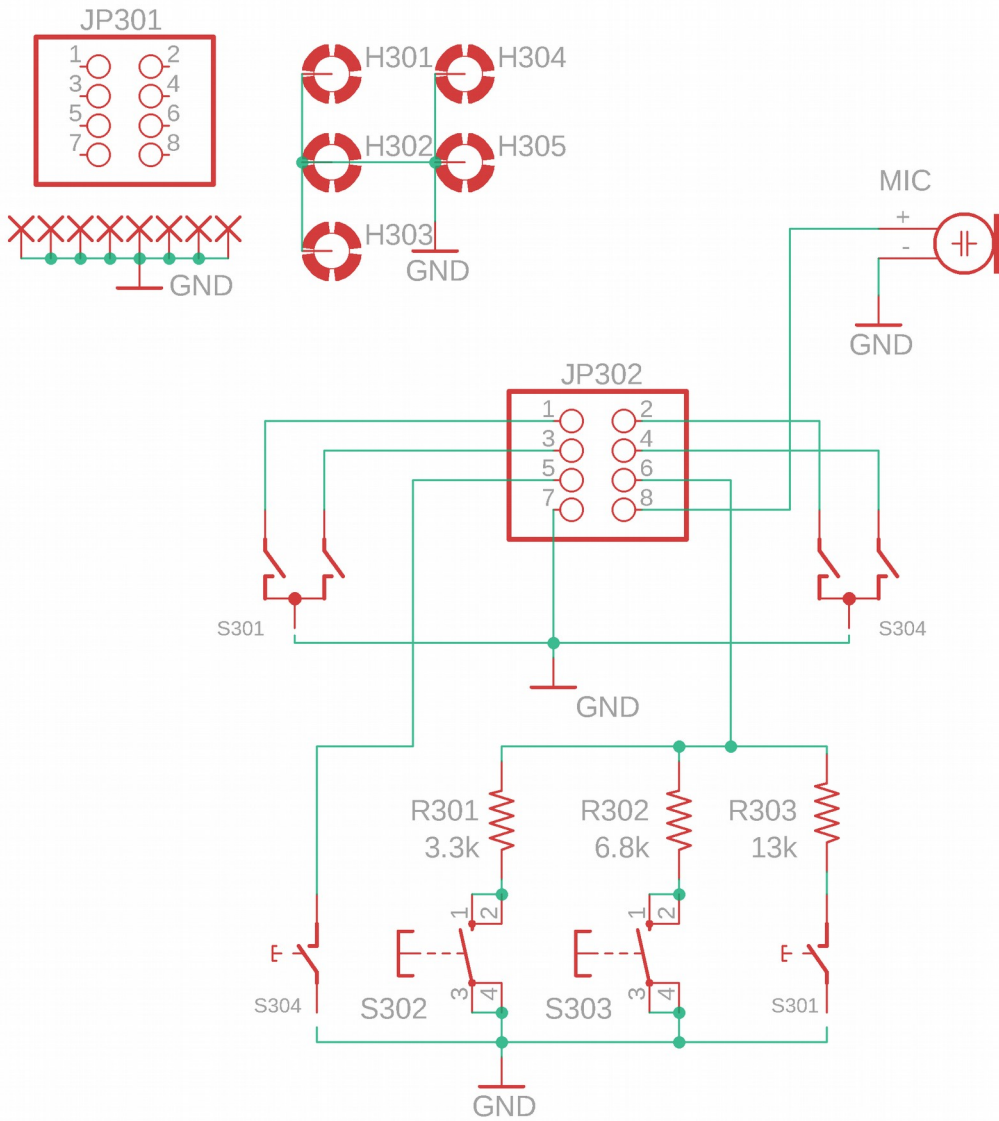


## Plug-in PCB #2

### 1: Power supplies



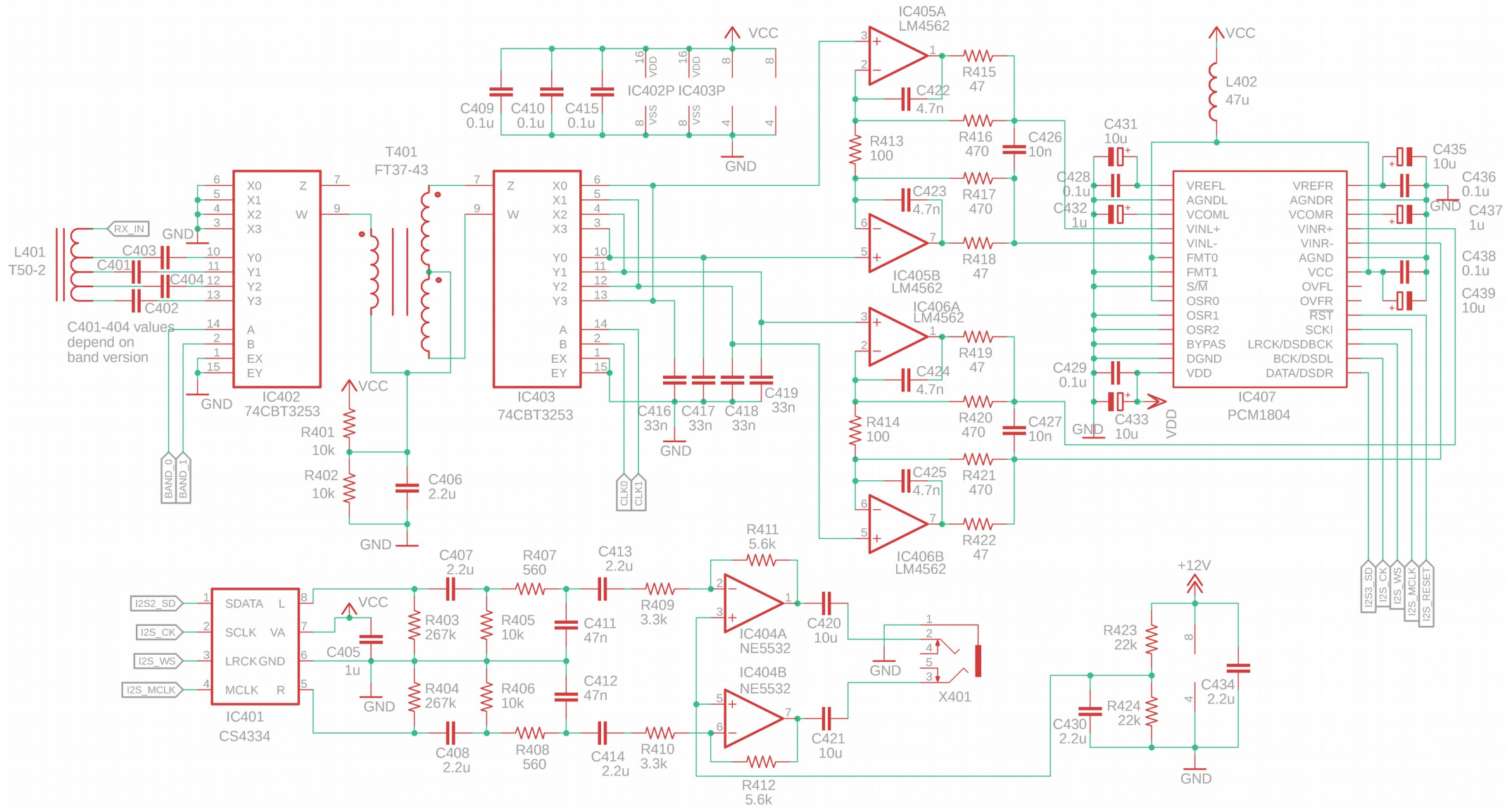




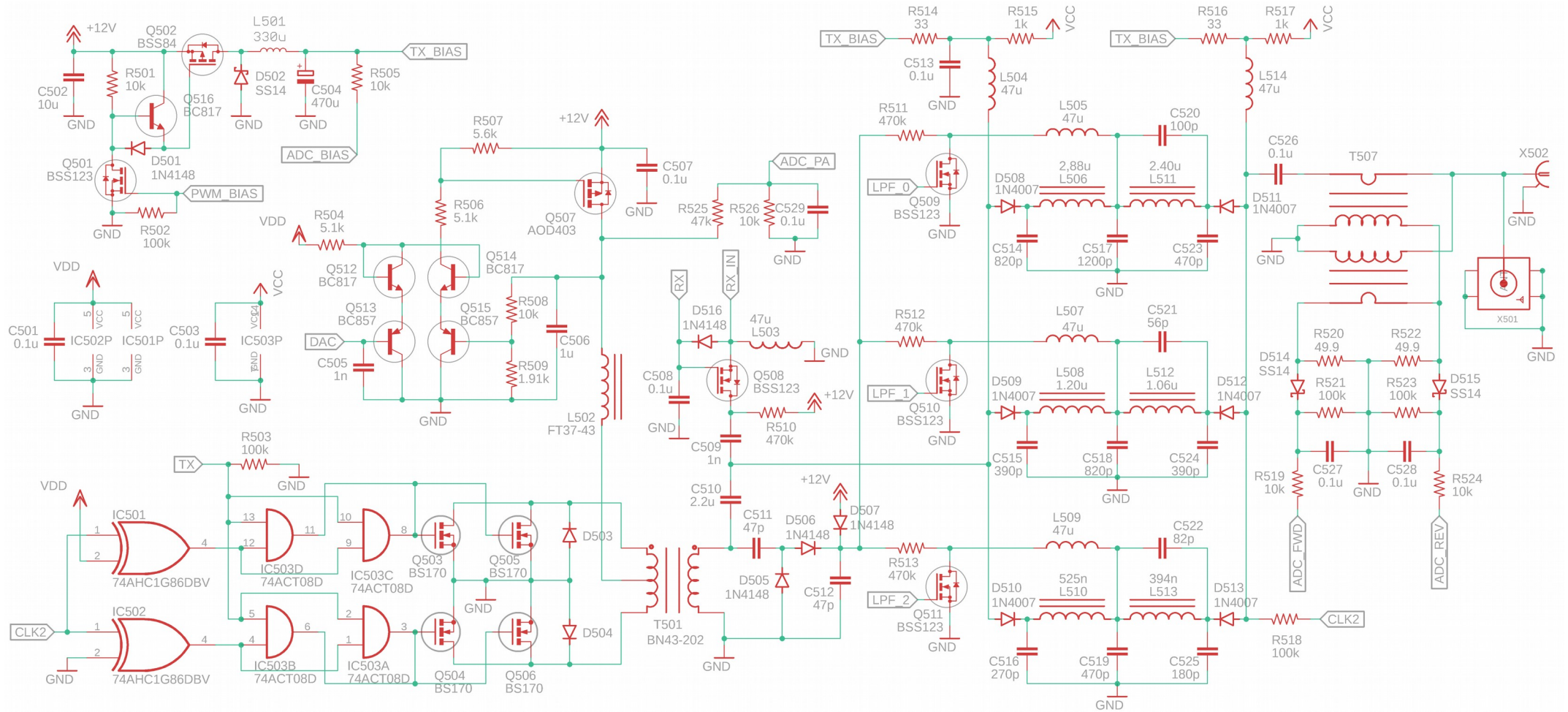
Plug-in Controls board

LCD board

**3: LCD and Controls boards**



## 4: Receiver



## 5: Transmitter