

Ultimate3: QRSS Labs Multi-mode QRSS Beacon Kit

v3.04

1. Introduction

This is the operation manual for the third generation “Ultimate3” Multi-mode QRSS beacon kit. Please read it in conjunction with the assembly manual for building the kit. This version supports modes: QRSS, FSKCW, DFCW, Hell, DX Hell, Slow Hell, FSK, CW, CW ID, WSPR, WSPR-15, TX and customisable patterns.

2. Operating instructions

The microcontroller has a 1024-byte Electrically Erasable Programmable Read Only Memory (EEPROM). This is used for storing your individual settings such as mode, keyer speed, and message. When the kit is first switched on, it automatically enters the “run” mode, in which the message is being transmitted in the selected mode. This is so that in the event of power interruption, the kit recommences the message transmission as soon as power is restored, without user intervention.

When you have just built the kit, the memory will contain only certain default settings, and an empty message. An error will be displayed, saying “Error: Message”, which indicates that the message is empty:

It is now necessary for you to configure the message and settings for your use.

2.1 Menu system

The user interface consists of the 16-character 2-row LCD and two push-buttons. There are 28 user-configurable settings available. Many of the menu items have multiple settings grouped into one item. The menu system allows all of the settings to be edited. The use of only two buttons to edit so many settings necessarily means that you must scroll through various options by many button presses. Clearly, there is no full computer keyboard in the kit with which to edit your alphanumeric message. However, the use of these two buttons to control the kit is fairly intuitive.

The menu is a list of items and the LEFT button is used to scroll through these items. When you see the item which you want to edit, press the RIGHT button to start editing it.

After cycling through the list of menu items using the LEFT button, the system is returned to the “Run” mode, transmitting the configured message.

Note the final item “Right button to start!”. When this final item is reached, you must press the RIGHT button, which then resumes the “Run” mode. The reason for this is that if, for example, you only wanted to change the contents of the first mode setting. It would be tiresome to have to scroll carefully through the remaining items until the “Run” mode was resumed. There are many configurations and you could easily miss the run mode, re-entering the menu system again at the first item. With the right button start feature, you can simply keep the LEFT button pressed, relying on the automatic button press repeat to quickly cycle through all the remaining menu items and stop at the end. It is also useful for when you want to start the system at an exact time.

2.2 Editing a menu item

There are three types of menu item: alphanumeric (e.g. callsign), numeric (e.g. frequency), and list (e.g. mode). Editing a configuration is slightly different depending on the type. When scrolling through the list of menu items using the LEFT button, you enter editing mode by pressing the RIGHT button.

2.2.1 List editing

If the menu item is a list menu, such as the list of mode types, use the RIGHT button to cycle through the list to find the setting you want. When you have chosen the setting you want, press the LEFT button. This saves the setting into memory and the list setting leaves editing mode.

2.2.2 Number editing

When editing a numeric setting, the RIGHT button is used to cycle through the numbers 0..9 until you find the number you want. The LEFT button moves rightwards one position to the next character to be edited. The current character being edited flashes. When the final (rightmost) digit has been chosen, a LEFT button press saves the setting into memory and returns you to the menu list.

Note that in some cases, there are restrictions on the value which may be chosen. For example, when editing the 10's of minutes digit, the RIGHT button only cycles 0..5 then returns to 0.


2.2.3 Alphanumeric editing


The most complex editing is alphanumeric, which also includes certain punctuation characters supported by the Hellshreiber character set. The principle is the same as for Number editing: the LEFT button moves the cursor one character to the right, and the RIGHT button cycles through the letters, punctuation and digits. However facilities are also provided to delete one character, or the whole message.

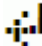
The order of the letters, punctuation and numbers is as follows:

ABCDEFGHIJKLMNOPQRSTUVWXYZ /+~?., ' =) (:
*+!@0123456789

The following characters have special function:

 **Backspace (delete):** If you select this character as the current flashing character using the RIGHT button, then when you press the LEFT button, the current character is deleted and the flashing cursor moves back left one position.

 **Delete all:** If selected as the current character, pressing the LEFT button has the effect of deleting the entire message, starting again at the left of the screen. There is no "undo", so use with caution!

 **Enter (finished):** If selected as the current flashing character, pressing the LEFT button is used to finish editing the setting. The setting is saved, and you return to the main menu list. Note that the text that is saved is only the text to the left of the Enter symbol. If you select this symbol and press the LEFT button when you are not at the furthest right position of the message, then everything right of your position is deleted.

Note that when you continue to press the RIGHT button, there is an automatic key-repeat feature so that you can cycle quickly through the characters without having to press the RIGHT button many times. When pressing the RIGHT button continuously, the character will stop cycling at the 'Z', '9' and 'Enter' characters. To resume cycling through the characters, release the button, then start pressing again. This makes editing easier and faster because you are not so likely to go too far past the character you are looking for, and have to cycle through them all again.

2.2.4 Configuration validation

In some cases, the configuration setting is validated at the time of entry. For example, the system does not allow the entry of an invalid time setting, or entering letters where numbers are required.

Additionally, there are many cases where particular combinations of settings produce an invalid situation for the transmission mode being used. When you have cycled through the menu and made any necessary amendments, upon pressing the right button to start, a validation is performed. If there is any reason why the configuration is invalid, an appropriate error message will be displayed, prompting you to return to the configuration setting to correct it. Potential error messages and solutions are described in a section below.

2.3 Menu configuration settings

Not all of the user-configurable settings are going to be relevant to the mode you wish to use, or to your hardware configuration. The following sections explain each setting in detail.



```
[0] 1 10,140,200
WSPR 23 3
```

This is an example of a Mode setting menu. The first 16 configuration screens are all Mode settings. They facilitate the selection of band, frequency and mode combinations. When the system is placed into the Run mode, it will sequence through all 16 mode configurations in turn. This allows you to program sequences of bands, if you have connected the optional relay-switched Low Pass Filter (LPF) kit. Even if you are not using the relay-switched LPF extension kit, you may still use different modes and frequencies, and the mode settings enable a rich set of control signals that you can use to extend the functionality of the kit.

The screen contains multiple elements which are explained here in turn with reference to the example shown.

[0] is the mode index. It cannot be edited, it simply shows you which mode setting you are editing. The 16 mode menus are labelled 0 to 9 then A to F.

1 is the band. This value can be from 0 to 5, and selects one of the six LPF band-switching relays, when you are using the extension kit. During transmission, one of the six control lines “BAND 0” to “BAND 5” in the circuit diagram (see Assembly document) are activated. The control lines are active-low and can be used for your own modifications, if not using the relay-switched LPF extension kit. When using the relay-switched kit, you should ensure that the low pass filter board plugged into the selected slot is appropriate to the chosen transmission frequency.

10,140,200 is an **example** transmission frequency: the centre frequency in WSPR mode; Frequency Shift Keying (FSK) is added to this in FSK modes.

WSPR is the transmission mode. The available modes are: None, FSKCW, QRSS, DFCW, Slow Hell, Hell, DX Hell, CW, CW ID, WSPR, WSPR-15, TX.

23 is the Power output, in dBm. It is used only for the WSPR message and can be left at the default 00 for all transmission modes other than WSPR and WSPR-15. The power setting is part of the Mode configuration screen because you may wish to transmit at stepped power levels, using a relay-switched attenuator. In this case you would require the WSPR message to be re-encoded for each transmit frame, and this configuration allows that possibility.

The power output setting is limited to certain values by the WSPR protocol, listed in the table below.

3 is an auxiliary output. This appears on the LCD data lines D4-D7 when not being used for writing to the LCD or DDS. These additional control lines can be used to control other relays or circuits in your

application. For example you may wish to control relay-switched attenuators, or switch between different antennas for side-by-side comparison purposes. Some examples will be given in a different document.

The allowable power values according to the WSPR protocol, with their corresponding power in watts, are listed below:

00 dBm	=	1mW
03 dBm	=	2mW
07 dBm	=	5mW
10 dBm	=	10mW
13 dBm	=	20mW
17 dBm	=	50mW
20 dBm	=	100mW
23 dBm	=	200mW
27 dBm	=	500mW
30 dBm	=	1W
33 dBm	=	2W
37 dBm	=	5W
40 dBm	=	10W
43 dBm	=	20W
47 dBm	=	50W
50 dBm	=	100W
53 dBm	=	200W
57 dBm	=	500W
60 dBm	=	1000W

All values from 00 to 57dBm can be configured in the Mode screens. 60 was left out as it made the firmware simpler, and in any case it is assumed that really you will NOT be operating WSPR with one kilowatt. WSPR is supposed to be a WEAK signal mode!

A good recommended value for this kit would be 23dBm (200mW) which is close to the measured prototype output power of 180mW (30m value – other band output powers will vary).

Enabling/Disabling Mode settings:

From v3.03 onwards, each mode setting screen can be enabled or disabled. The default situation at the start, is for ALL mode settings to be disabled. When a mode setting is disabled, it appears “crossed out”. The following example shows an enabled, and disabled screen:

Enabled mode setting:



Disabled mode setting:



In order to toggle a mode setting between enabled and disabled state: cycle through the menu items with the Left button until you find the mode setting screen you want to enable or disable. Then press the right button twice, to toggle the enable/disabled state.

To EDIT the mode setting contents, e.g. the band, frequency or mode, press the Right button once, followed by the Left button to move the cursor onto the Band setting (1 in the above example). Then press the Left button to move along to the Frequency, then Mode, Power and Aux settings.

Note: Error checks

Any of the mode setting screens can be enabled or disabled. This feature can be used to program your favourite band, frequency and mode combinations, then to quickly be able to enable/disable which ones you want to use. Of course, at least one of the mode settings must be enabled and correctly set up, in order for any transmission to occur. When you have finished setting up the configurations (mode setting screens, message, callsign etc), an error check is performed to make sure that all the configurations are correct and consistent. This check validates the configuration of all enabled mode setting screens only. Disabled mode setting screens are ignored by the error check.

It is important to realise that some configuration parameters are actually shared by multiple different modes, and can be used in slightly different ways.

Example 1: the message setting contains the message that is transmitted in the QRSS, FSKCW, CW, FSK and DFCW modes. But the message setting is also transmitted by the Hellschreiber modes. Now the Hellschreiber message can contain characters such as + and = which the QRSS modes do not allow. The QRSS modes can only contain 0-9, A-Z, / and Space characters. Therefore in a situation where one of the mode settings transmits FSKCW, and another transmits Slow-Hell, the message must contain only characters which are allowable in both modes – which is to say, no +, = etc.

Example 2: the Frame setting has restrictions in the WSPR modes. It must be an even number of minutes, for WSPR. But for WSPR15, the Frame setting must be a multiple of 15. Now if you happen to be sending WSPR in one of the mode settings, but another enabled mode setting screen is sending WSPR15, the Frame configuration parameter must be a value which is valid for both WSPR and WSPR15. Furthermore the general restriction that Frame must be less than 60 applies always. The only valid Frame value in this case would be 30.



Speed
003

The Speed setting selects the dit speed, in seconds, for the following modes: FSKCW, QRSS, DFCW. In CW and FSK modes, the Speed setting means Words Per Minute. In Slow-Hell mode, the setting is the number of seconds duration of one character (see later section for explanation). The setting has no effect at all, in CW ID, Hell, DX Hell, WSPR or WSPR-15 modes; these modes all have a defined timing which cannot be changed. It also has no effect in the TX mode.

The default setting is “006” (6 seconds in QRSS modes, 6 words per minute in CW and FSK modes).



Message
73 DE G0UPL

The message setting is an alphanumeric parameter which may be up to 250 characters long. For FSKCW, DFCW, CW, QRSS modes, it must be in the range A – Z, 0 – 9, / or a space character. Hell modes can use punctuation characters as well, but not the * character.

Any message may be entered, but if the message is invalid for the mode being used, an error will be displayed.

The * character has a special purpose, it is used to signify the start and end of user-customisable pattern generation specification (see description below).

IMPORTANT: remember to add a space character at the beginning or end of your message!

G0UPLG0UPLG0UPL... etc. is not easy to read, because it has no spaces. G0UPL G0UPL G0UPL is how you want your message sent, with a space between the messages.



```
Callsign
G0UPL
```

The callsign setting is an alphanumeric setting, which may be up to 14 characters long. It can theoretically include punctuation but clearly that isn't normally used in a callsign. The callsign is NOT used for the normal message transmission in most modes.

The callsign is used only for TWO purposes:

- 1) The Callsign is used for generating the WSPR message encoding
- 2) The Callsign is sent at 12wpm in the CW ID mode, which can be used to send your callsign in standard 12wpm CW at pre-programmed intervals, as a station identifier (read your license conditions)

Note that when using the WSPR mode, the callsign must satisfy certain rules. Firstly, it can only be a 5 or 6 characters long. The callsign must consist of the following:

- 1) One or two characters consisting of A-Z or 0-9
- 2) One character which must be a number, 0-9
- 3) Three characters which must be A-Z or space

These restrictions are placed on the callsign in order to satisfy the requirements of the WSPR encoding algorithm. **Be sure to finish the 5 or 6 character callsign with a string terminator, using the “Enter” symbol (see page 2). Do not be tempted to pad the remaining string size with spaces!**

Note: if your callsign is a 4-character callsign then you need to add spaces at the right, to comply with 3) above. If your callsign is of the form AB0CD then you need to add one space at the right, e.g. “AB0CD “.



```
Locator
I090
```

The locator setting is only used in WSPR mode, and is one of the inputs to the WSPR encoding algorithm. It is four characters, the first two are always A – R and the second two are numbers in the range 0 – 9. Editing this parameter automatically prevents incorrect entries. The locator is not needed for any other mode than WSPR and may be left blank.

If a GPS module is connected with a correctly configured serial data stream, then the locator is set automatically from the GPS data and does not need to be entered manually. However, in this case the system will skip past transmission of any WSPR mode until the locator has been decoded from GPS data.

```
FSK (Fine Hz)
0 004
```

This is the first of the configuration screens containing TWO settings (firmware versions pre v3.02 had them in separate configuration entries). The two settings are related and it makes sense to edit them in the same screen.

```
0
```

The first setting switches Fine FSK on (1) or off (0). This is the old “Fine FSK” parameter (pre v3.02).

When Fine FSK is 1, the second FSK (Hz) parameter's meaning is changed. The FSK (Hz) parameter then specifies the number of DDS frequency steps, using the maximum fine resolution available in the DDS module. With the supplied module having a 125MHz reference oscillator, the step size is 0.029Hz. So for example, if “Fine FSK” is “On” and “FSK (Hz)” is 010, the actual frequency shift will be 0.29Hz (10 x 0.029Hz).

This setting therefore gives very fine control over the frequency shift, which can be useful for the very slow modes sometimes being used on LF and MF bands.

```
004
```

The second setting determines the FSK size, and may be in the range 0 to 999Hz. For FSKCW and DFCW modes, the specified FSK is the height of the symbol shift. For Slow-Hell mode, it is the height of the text. The parameter does not apply for the other modes.

Generally, you will want a shift of 4 or 5 Hz for the slow-speed modes. Any more than that, will be considered anti-social by other operators. For the fast-speed FSK mode used for beaconing on the 10m band, a few hundred Hz is typically used.

Note that when using WSPR modes, the correct frequency shifts for WSPR are calculated by the kit; the “Fine FSK” and “FSK (Hz)” settings have no effect in the WSPR mode. They also have no effect on CW, CW ID, QRSS or the Hellschreiber modes.

```
<Frame Start>
10 00
```

```
10
```

The first parameter is “Frame” and is used to define the message frame length.

A technique called “stacking” has been developed by QRSS'ers to improve signal-to-noise ratio even further. The transmitting station transmits messages defined into a frame of a precise length. The receiving station overlays multiple message reception frames on top of each other on the display. Any message which is repeating at that precise frame length gets re-enforced by the averaging of multiple message receptions; any other non-repeating message or QRM gets reduced.

As an example, consider a message which in the chosen QRSS mode and speed happens to take 8 minutes to transmit. You could set the “Frame” setting to 10. This means that after the message

transmission has completed, the microcontroller will wait until 10 minutes after the message start, before starting the next transmission. Receiving stations who have are using QRSS decoding software with the stacking feature, and have it set to 10 minutes frame length, will be able to collect six (say) transmissions over one hour and average them together to improve the signal-to-noise ratio.

This parameter is also used for the WSPR mode. In the WSPR mode, the Frame parameter defines how often the WSPR transmission packet is transmitted. WSPR transmissions take just under 2 minutes and are always aligned to the start of an even minute. Therefore in WSPR mode, the Frame parameter must be an even number (a multiple of 2), e.g. 10 minutes (9 minutes is not possible).

Typically, Frame should be set to 10 minutes for WSPR. 10 minutes is also a popular frame length for “stacking” QRSS reception, as long as your message transmission fits within 10 minutes. If it does not, the controller will wait until the next 10 minutes have elapsed.

In WSPR-15, Frame should be a non-zero multiple of 15 minutes, typically 15 minutes.

When using GPS frequency stabilisation, you must choose a non-zero Frame parameter. This is because the frequency stabilisation must take place when there is no transmission from the kit, i.e. during a pause between transmissions. The frequency stabilisation takes 14 seconds and occurs just after the end of a transmission. Therefore you need to ensure that the Frame parameter is sufficiently large that there is a minimum gap of 14 seconds between the completion of your message transmission and the start of the next one. The duration and type of the frequency stabilisation is determined by the “Cal” parameter, described later.

Default: the default value is 00 which means no frame size is defined, and the stacking feature is not used. All mode/frequency combinations are sent repeatedly in sequence. Frame must be set to a non-zero value for WSPR and WSPR-15.

00

This second parameter is “Start” and is used in conjunction with the Frame parameter. It defines when the transmission cycle starts. For example if Start is set to 03, and Frame is set to 10, then the message transmission will start on the when time reaches 00:03 (or 3 minutes past any hour), and will repeat at exactly 10 minute intervals.

Again for WSPR, the Start parameter must be even (a multiple of two). For WSPR-15, a multiple of 15.

Default: the default value is 00 which means the Start parameter is not used.

```
GPS (Mode Baud)
0 009,600
```

0

The first setting is the GPS mode. This controls how and whether GPS is used. If set to a non-zero value, and a GPS module is connected and producing a valid 1pps signal, then the accurate time pulses from the GPS unit will be used to lock the frequency, and to keep precise time. In the event of a GPS signal outage (for example, poor reception), the kit can continue to use the on-board 20MHz crystal oscillator for time-keeping.

If additionally the serial data connection from the GPS unit is valid, the Maidenhead locator will be computed from the latitude and longitude received from the GPS module, and the internal realtime clock will be set using the time from the GPS module.

When using the connected GPS module for frequency stabilisation, you must choose a non-zero Frame parameter. This is because the frequency stabilisation must take place when there is no transmission from the kit, i.e. during a pause between transmissions. The frequency stabilisation begins immediately after the transmission has completed. You need to ensure that the Frame parameter is sufficiently large that there is a minimum gap of about 14 seconds between the completion of your message transmission and the start of the next one. (See also the “Cal” setting described below, which controls the type and duration of the frequency stabilisation)

Frequency stabilisation can also be provided by a 1pps signal derived from an accurate frequency reference. In this case, connect the 1pps signal to the 1pps connection, and set Use GPS to “On”. With no serial data, the kit will not decode the Maidenhead locator or time, however the 1pps signal **will** be sufficient for frequency stabilisation.

When GPS is enabled, and a 1pps signal is present from the GPS receiver module, a heart symbol will appear on the display. The heart beats in sync with the 1pps signal input.

While the system is calibrating, the bottom row of the LCD shows the text “Cal” followed by a status bar animation. The status bar fills as the calibration progresses. When the calibration is completed, the bottom row is blanked again. Note that in the event of loss of 1pps signal, the status bar will pause, and calibration resumes when the 1pps signal is regained.

Please see the website for more details on the GPS frequency calibration algorithm.

GPS Mode settings:

- 0 GPS is not used at all. The kit is in free-running mode, it will run from it's 20MHz crystal oscillator.
- 1 For backward compatibility, this is how the kit worked in firmware version v2.03. The kit triggers on a change in the voltage level on the 1pps input. A timer is included to prevent it triggering on both rising and falling edges and to correctly detect the right edge, theoretically. This mode would probably be useful if the pulse width from the GPS is very short.
- 2 The kit triggers on the rising (positive) edge of the 1pps signal. This is appropriate for most GPS modules, where the pulse width is 100ms for example.
- 3 The kit triggers on the falling (negative) edge of the 1pps signal.

The image shows a close-up of a blue LCD display. The text '9,600' is displayed in white, seven-segment characters. The comma is positioned between the first and second digits from the right.

This second setting on the GPS screen determines the baud rate for receiving serial data input from the GPS module. It must be set to match the data output from the GPS module otherwise no data can be decoded. You will need to refer to your GPS module documentation to determine the correct speed.

Any baud rate can be entered here. 9,600 is most common and is the default. The kit should be able to support 115kbps but higher than this may be subject to inaccuracies and may not function properly.

The kit uses no parity, 1 stop bit, and 8-bit data. I have never encountered a GPS module that does not use the same settings, which appear to be very standard.

```
Cal (HP Time)
00 010
```

```
00
```

The first setting is “Cal HP” which means “Calibrate Huff Puff”. When set to 00, the behaviour replicates pre-v3.01 behaviour. In this case the frequency is set to 6.25MHz and is measured during the 1 second interval between incoming 1pps pulses, then a correction is computed. This is repeated for 10 seconds then the new reference frequency is saved and used. Since the measurement at 6.25MHz for 10 seconds will have a resolution effectively of 0.1Hz, the 125,000,000 reference frequency is calculated to an accuracy of 2Hz.

When Cal HP is set to a non-zero number, the calibration methodology changes to Huff Puff style oscillator correction. In this mode, the frequency is set to 6.25MHz and measured as before. If the measured frequency is higher than 6.25MHz, it means that the reference oscillator calibration frequency must be too low, so the Cal HP amount (in Hz) is added to the 125,000,000 reference oscillator frequency. Conversely, if the measured frequency is lower than 6.25MHz, it means the reference oscillator calibration is higher than the real world value, so the parameter is decreased by the Cal HP amount.

The Huff Puff calibration mode can be very effective with some GPS modules which exhibit a large jitter (timing inaccuracy) on their 1pps signal. This appears to be the case with Sirf III modules including the VK16E.

The optimum setting for Cal HP will depend on how much drift is to be compensated, since Huff Puff mode corrects a limited amount of error during each calibration. For example, if Cal Time is 10 seconds and Cal HP is 20Hz, then the maximum correctable error on the 125MHz setting is 200Hz per calibration. For this reason, when using Huff Puff calibration mode, it is a good idea to increase the Cal Time setting.

For more detail on the Huff Puff calibration mode and use with the VK16 GPS module as an example, please see the description on the Ultimate3 kit web page (see resources section below).

```
010
```

The second setting determines the length of time to spend doing the reference frequency calibration using a GPS 1pps signal. The default is 10 seconds, to reflect behaviour pre-v3.01. If you wish to calibrate using the Huff Puff calibration mode, then it is possible to set Cal Time to a longer interval.

If Cal HP is set to 00 (non-HP mode, the original frequency measurement calibration mode pre v3.01), then the calibration always takes 10 seconds, regardless of the Cal Time setting. The Cal Time setting is ignored for non-HP calibration.

For Huff Puff calibration mode, a suggested approach is: for example, if transmitting WSPR once every 10 minutes, set Cal Time to 240 and choose a Park Mode. In this case the 2 minute WSPR frame would be followed by 4 minutes (240 seconds) of calibration, then 4 minutes of “Park” in which the DDS frequency could be set to near the transmission frequency, to allow the DDS temperature to stabilise.

The maximum possible Cal Time is 250 seconds. This is because the internal representation is an 8-bit integer value (maximum value 255), and it also has 4 seconds added before the calibration starts. If you try to enter a value higher than 250, the system will automatically set Cal Time to the maximum value of 250 seconds.



Park (Mode Freq)
0 00,000,000

The “ParkMode” and “ParkFreq” parameters are used to control the behaviour of the kit during key-up. This was intended to prevent the -30dB (or so) leakage of carrier to the antenna, even when transistor Q1 was switched off.



0

The first parameter is the Park Mode, which has the following meaning:

- 0 Same behaviour as v2.03. The DDS is left on the same frequency during key-up. The problem with this is that there is signal leakage through Q1 during key-up.
- 1 During key-up, the DDS frequency is shifted up depending on "Park Freq" (the second setting on this screen). The number of Hz of shift is the setting multiplied by 0.93. Do not enter a value higher than 65,535! The maximum shift is therefore $65,535 * 0.93$ which is 61,034Hz.
- 2 During key-up, the DDS frequency is set at the "Park Freq" frequency which can be zero, or whatever you want. A zero park frequency is the same behaviour as in v2.04. However please note that it appears that on some DDS modules, this causes a frequency drift during the next key-down. This will be worse on higher transmission frequencies than lower. It can be bad enough to prevent WSPR decodes.
- 3 The DDS output is switched off using bit 34 of the control word (“power down”)



00,000,000

The second setting is the Park Frequency. The above description explains how this setting is used, depending on the Park Mode.



Sys. Freq.
20,000,000

The system clock frequency is the crystal oscillator frequency which clocks the microcontroller. In this kit, a 20MHz crystal is used, and there is no facility for adjusting its frequency – the trimmer capacitor sometimes used in such circuits is omitted here in order to keep the kit as simple and inexpensive as possible.

The system clock is used for timing purposes when there is no GPS module connected to lock the frequency. Where the frequency is slightly different to 20.000000MHz the time-keeping of the real-time clock will become inaccurate. Ordinarily this will not matter for most modes, the exception may be WSPR where the frames must coincide with the start of even minutes, within a second or two. Over some days, an inaccuracy of a second or two per day in the real-time clock can cause the WSPR signal decoding to become impossible.

Accordingly this parameter has been provided so that if you wish, you can set the frequency to the actual exact frequency of your 20MHz crystal. This will ensure that time-keeping is precise. The best way to measure the oscillation frequency will be to use a general coverage receiver having an accurate digital

display, and listen for the 20MHz signal on the receiver, then tune the receiver to zero-beat, i.e. until the tone of the audio decreases to 0Hz. Then enter this frequency into the Sys. Frq. configuration setting.

An alternative method may be to measure the time gain or loss over a period of several days, and work backwards to determine the required value to use for the Sys. Frq. Parameter to correct it.



Ref. Frq.
125,000.000

The Reference Frequency setting is the actual frequency of the on-board 125MHz canned crystal oscillator module on the pre-assembled DDS module board. It is important to set it accurately, otherwise the actual output frequency of the kit transmission will not match the value set in the Frequency parameter (see above). Calibration of this parameter is discussed in section 6 of the Assembly manual.



Set Time
00:53

The kit has an internal real time clock which is used for the Frame (QRSS stacking) and for timing WSPR messages. This configuration allows you to set the real time clock. The clock setting takes effect, and the seconds (internally counted but not displayed) are set to zero, when the LEFT button is pressed after setting the minutes. **Accurate timing is critical for the WSPR modes.** With careful adjustment of the “Sys. Frq.” parameter, the 20MHz oscillator will keep accurate enough time for WSPR for up to a week, even without GPS.

Note that if using a GPS module with “Use GPS” switched on, and if there is a valid serial data stream properly decoded (by correct choice of “GPS Baud” parameters), then the time is set automatically.

An accurate real time clock is not required other than for the WSPR modes. Even if the real time clock is not set, it will start from 00:00 when the system is powered up. This is sufficient for stacking if enabled (i.e. if Frame is non-zero).



Right button
to start!

Finally at the end of scrolling through all the configuration menu items, this screen is displayed. Now simply press the Right button, to start the kit in its transmission sequence.

You can always reach this screen quickly by keeping the left button pressed to cycle rapidly through the configuration menu items which you do not wish to change.

If you have made any errors in the configuration, then an error message will now be displayed (if the kit is unable to start transmitting). The error messages are explained in the following section.

2.4 Understanding error messages, and how to fix them

In the event of inconsistent parameter setting, an error message may be displayed on the LCD. The cause of these messages is well-defined. If there is a number in square brackets, it indicates the mode setting screen where the error first occurs (but the error may apply to multiple mode setting screens).

The following lists the possible error messages and their causes.



Error!
No transmissions

There are no enabled mode setting screens. At least one of the 16 mode setting screens [0] to [F] must be enabled. To toggle a mode setting screen between enabled/disabled state, scroll through to the mode setting screen to be changed, and press the Right button twice. See also the description in the mode setting screen paragraph above.




Error! [0]
Mode

This error occurs if the mode setting indicated (mode 0 in this example) is set to “None”.



Error! [7]
Frequency

This error occurs if the frequency setting indicated (mode 7 in this example) is zero.



Error! [2]
Speed

This error results from having a zero Speed parameter, or Speed > 200 seconds, in any mode other than Hell, DX Hell, CW ID, WSPR, WSPR-15 and TX. These modes have specific defined speeds which are not adjustable, and so the Speed setting is ignored for them. In this example, the error is in mode setting [2].



Error! [0]
Callsign

For a setting (0 in this example) sending a WSPR mode, you have not entered your callsign, or it is invalid for the WSPR encoding algorithm. Please check the description of the callsign parameter setting, see Callsign parameter description above.

For a setting (0 in this example) sending the CW ID mode, you have not entered your callsign, or it contains an invalid character for the CW transmission. Valid characters are A – Z, 0 – 9, space and /. Please enter a correct value in the Callsign parameter.



```
Error: [4]
Message
```

This error (for example, mode setting 4) concerning the transmission message can occur for two reasons:

- 1) The message is empty, and the mode is set to anything except a WSPR mode. In the WSPR modes, the message encoding is generated automatically from the callsign, locator and power settings. In all other cases, the message must be set, otherwise the kit has nothing to transmit.
- 2) In modes QRSS, FSKCW, DFCW, CW or FSK,, there is an invalid character in the message. Valid characters are A – Z, 0 – 9, space and /. in the case of FSKCW the message may also contain an asterisk * which enables the user-customised pattern mode.

Note that the “Message” setting is not used in the “Transmit” mode but you still need to enter something. Anything at all, will be fine.



```
Error: [0]
(Frame Start)
```

This error message (the example here, shows the mode setting 0 is causing the error) can have two possible causes.

In WSPR mode, Frame (number of minutes between transmissions) must be even (a multiple of two), and it must be non-zero. 10 [minutes] is the recommended value. In the WSPR-15 mode, Frame must be a non-zero multiple of 15, with 15 [minutes] being the recommended value.

In WSPR mode, the Start parameter must be an even minute (power of two), and in WSPR-15, a multiple of 15 minutes. In all modes, the Start parameter must be less than 60 (as there are only 60 minutes in an hour).

Note that if you have enabled a WSPR mode setting, as well as a WSPR15 mode setting, then the restrictions of BOTH modes apply. In this case, the only Frame setting which will work for both WSPR and WSPR15 is 30. The only Start settings which are valid, are 00 and 30.



```
Error: [5]
Locator
```

Again, an error which can only arise in WSPR mode, in mode setting [5] in this example. The locator must be a standard 4-digit Maidenhead locator (e.g. IO90). If you are getting this error, it means you have not properly set the Locator configuration parameter – it should consist of two letters in the range A – R followed by two digits in the range 0 – 9.

2.5 Understanding the automatic frequency calibration using GPS

When using a GPS with 1pps signal, the kit can calibrate the 125MHz reference oscillator. When a 1pps signal is present and GPS is enabled, a “heart” symbol is shown on the display, and “beats” in time with the incoming applied 1pps signal.

The automatic frequency calibration takes place immediately after a transmission sequence (mode settings [0] to [F]). In order for an automatic calibration to take place, Frame must be set to a non-zero value and there must be a sufficient gap to do the calibration.

During the first 4 seconds after the transmission sequence, the serial data stream from the GPS is parsed to extract location and time information; then disabled and the 1pps monitoring stabilised. Next, the calibration starts. The calibration time is determined by the Cal Time parameter in the Cal {HP Time} screen. The gap following the transmission sequence must be larger than Cal Time + 4 seconds.

The waiting screen, showing wait for the following transmission sequence to begin looks like this:



In this example, the time is 15:36:30 and the system is waiting until 40 minutes (time 15:40:00) to start the next message transmission. Additionally the heartbeat will flash, in the space on the top row. When a calibration is about to take place (GPS mode is non-zero), there will be an additional second line display:



Once the actual frequency calibration starts, the Cal text is followed by a status bar which indicates the progress of the calibration. When calibration has completed, the second row will become blank again for the rest of the interval until the next transmission frame starts.

During calibration, the DDS output frequency is set to 6.25MHz which is measured by the microcontroller, using the 1pps signal as the timing gate. Of course the keying signal is Off so the PA is switched off during the calibration, although some low level leakage on 6.25MHz is normal. Once the calibration is completed, the DDS is configured according to the “Park {Mode Freq}” screen settings.

Additional points to note, concerning the frequency calibration:

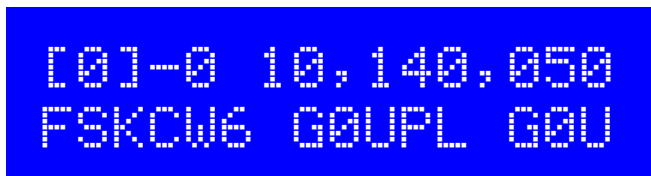
- 1) The calibrated frequency value is stored automatically in the Ref Freq. setting in EEPROM. Therefore when you next power up the kit, the previous frequency calibration is automatically used so the frequency should be close to the correct calibrated value.
- 2) When first switched on, a GPS unit powered from the same power supply may not yet have achieved 3D lock. In this situation the time will likely be wrong (starting at 00:00:00) and a WSPR transmission sequence would have the wrong timing and not be decoded. The first transmission sequence would therefore be a waste and potentially just cause QRM. Therefore from firmware v3.03 onwards, if GPS Mode is non-zero, the transmission sequence does not start until a valid time decode from the GPS. If there is no valid time decode by the time “Frame” minutes have elapsed, the system will give up waiting for a valid decode and start transmitting regardless.

- 3) From v3.03 onwards, at power up, the system does not do a calibration. It waits until after the first transmission sequence. This is because the stored Ref Freq value in EEPROM is probably more accurate than the first calibration would be, until a few minutes have passed allowing the reference oscillator time to warm up, therefore waiting for initial warm-up drift to cease.
- 4) Pressing the right button during a calibration cancels the calibration, and returns the Ref Freq to the previously stored setting.

3. QRSS Modes

The following is a short description of each kind of QRSS mode, and what to expect.

3.1 FSK/CW



The display's top line shows the sequence number, band and frequency, exactly as in the editing screen. In this example, it is sequence 0, band 0 and 10,140,050Hz. The bottom line shows FSKCW followed by the symbol length – in this example 6 seconds. Finally the message will be shown. The leftmost character is the one currently being sent. “-” after the sequence number, in the 4'th character of the top row, indicates a dash is being sent. Naturally a “.” will appear if a dit is being sent. As the transmission is sent, the message will scroll to the left.

In the following image, the decoded letters have been drawn above the received signal in yellow, to show clearly how the mode is to be decoded.

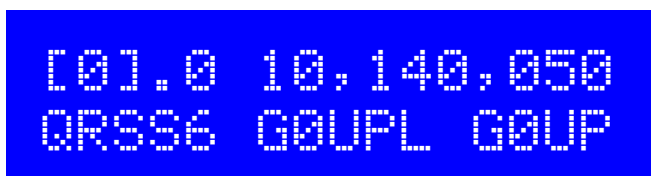


In Frequency Shift Keyed CW (FSK/CW) the dahs and dits have the same timing as traditional (slow) morse i.e. QRSS, but the carrier is always on and “key down” is indicated by a slight upwards shift of a few Hz. FSK/CW is the most popular of the slow-signal modes.

Good for: The transmitter being continuously on, avoids any “chirp” (frequency pulling) of the oscillator, that can be a problem, particularly in more simple circuits. The signal is very readable in the presence of QRM or in weak conditions, because of the continuously present carrier. Decoding the signal is intuitive, just by reading the top line like ordinary CW.

Bad for: Because the carrier is continuously on, it will take more battery power (if that's a concern), than an on/off keyed mode like plain CW. It also takes more bandwidth than the single sub-Hz bandwidth of plain QRSS.

3.2 QRSS



The display's top line shows the sequence number, band and frequency, exactly as in the editing screen. In this example, it is sequence 0, band 0 and 10,140,050Hz. The bottom line shows QRSS followed by the symbol length – in this example 6 seconds. Finally the message will be shown. The leftmost character is the one currently being sent. “.” after the sequence number, in the 4'th character of the top row, indicates a dit is being sent. Naturally a “-” will appear if a dash is being sent. As the transmission is sent, the message will scroll to the left.



The original plain QRSS mode is simply plain CW, but massively slowed down, typically with dit speeds from 3 seconds or slower, even all the way to 120 seconds in some cases.

Good for: Simple to decode by eye, since it is the same as what we can imagine hearing. Very narrow bandwidth and band occupancy, sub-1Hz.

Bad for: In weak signal conditions or where there is a lot of QRM, an interfering weak carrier may also look like an intermittent horizontal line, so the wanted signal can be hard to distinguish from the QRM. Fading (QSB) can cause interfering carriers to look like QRSS too. In simpler circuits, “chirp” (oscillator pulling) can be a problem.

3.3 DFCW



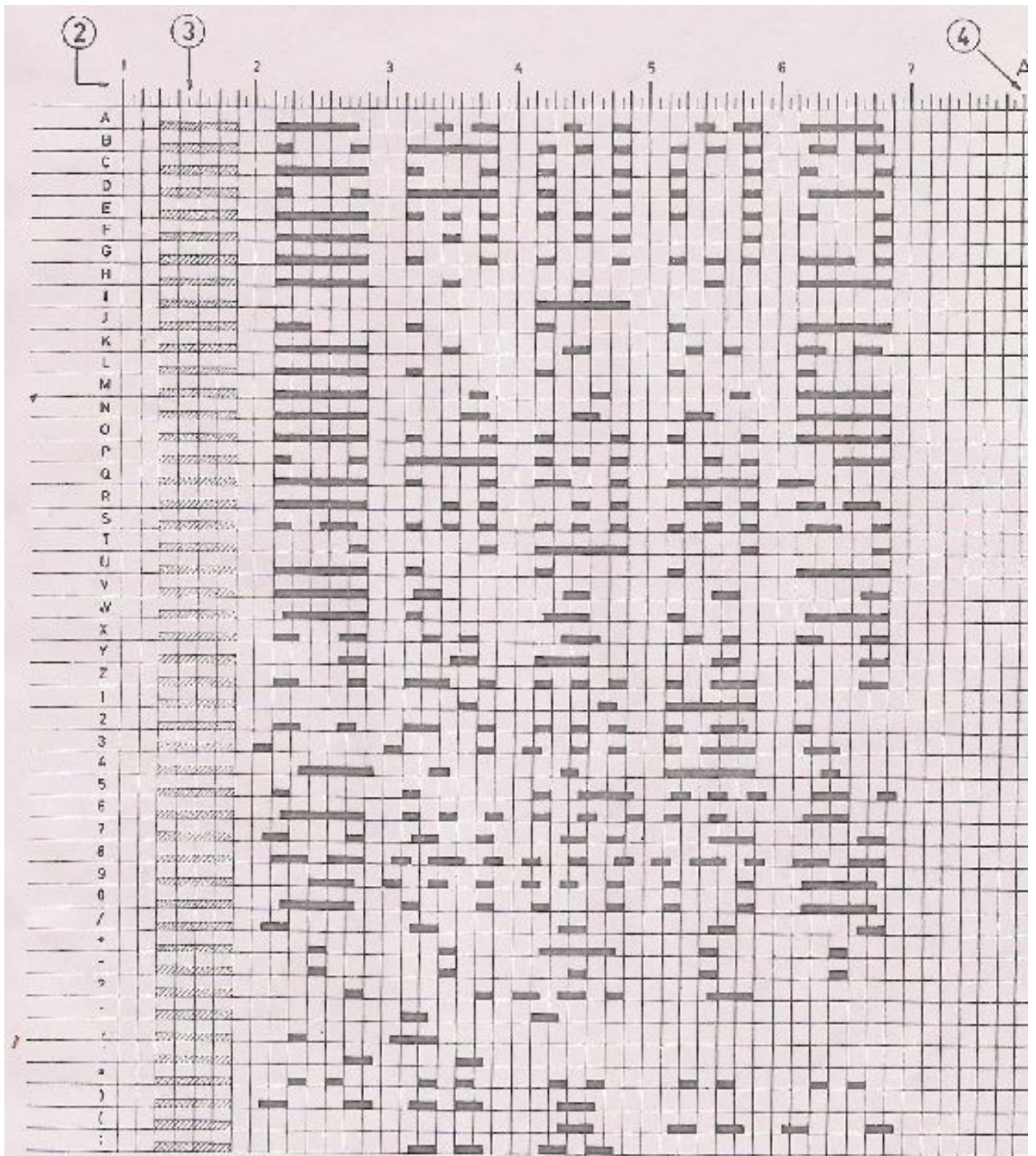
The display's top line shows the sequence number, band and frequency, exactly as in the editing screen. In this example, it is sequence 0, band 0 and 10,140,050Hz. The bottom line shows DFCW followed by the symbol length – in this example 6 seconds. Finally the message will be shown. The leftmost character is the one currently being sent. “-“ after the sequence number, in the 4'th character of the top row, indicates a dash is being sent. Naturally a “.” will appear if a dit is being sent. As the transmission is sent, the message will scroll to the left.



DFCW means dual-frequency CW. The dits and dahs are the same length, but dahs are shifted upwards by the FSK amount. A 1/3 dit-length gap inserted between symbols improves the readability.

Good for: The mode is faster than QRSS, with the same signal-to-noise ratio improvement, because the dah's are the same length as the dits. In QRSS dah's are three times longer. So the message transmission is faster.

Bad for: Not very intuitively easy to read as QRSS is. If the signal is a bit weak and hard to decode, the eye/brain may have more trouble “filling in the gaps”, because it is not so intuitive.



- ① Abwicklung der Sendenocken
- ② Einteilung der Meßscheibe
- ③ Anlaufschritt
- ④ Nullstellung der Senderachse

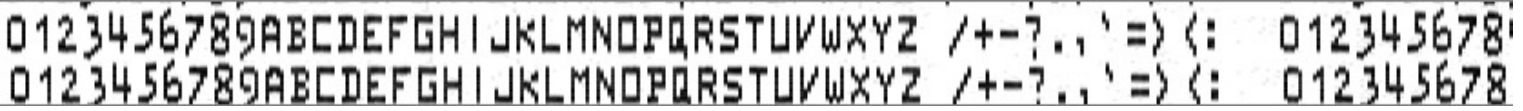
3.4 Hellschreiber (also called FeldHell).



```
[01.0 10,140,050  
Hell 0123456789A
```

As usual, the display shows the band, mode, frequency and the message scrolls to the left as it is sent.

The screenshot fragment below is from IZ8BLY's excellent Hellschreiber receiving (and sending) software.



```
0123456789ABCDEFGHIJKLMN OPQRSTUVWXYZ /+~?.,'=>(<: 012345678  
0123456789ABCDEFGHIJKLMN OPQRSTUVWXYZ /+~?.,'=>(<: 012345678
```

Hellschreiber is a fax-like mode designed in the 1920's by Rudolf Hell in Germany. It was later used in WWII. The literal translation into English would be "Light Writer" and of course rhymes with its inventor's name. Each character is made up of a 7-row, 5-column grid. Technically there are 14 half-rows, but there are no lonely half-pixels in the characters, half-pixels are only ever seen in groups of at least two. This was an ingenious idea to minimise transmission bandwidth yet improve readability. The baud rate of a standard Hell transmission is 122.5. Most of the characters fit into a 10-half-row, 5-column grid, but the numbers are extended above and below this in some cases.

Good for: Fun, history, and easy readability.

Bad for: Bandwidth. Hell is not a slow-signal mode; the bandwidth is said to be around 400Hz.

I am proud to be using the original Hell font in this kit as carefully designed by Rudolf Hell. I know this because Pierre ON5SL, who owns a real antique FeldHell machine, kindly sent me a scan of one page of the operator's manual. The page shows the drum pattern of the machine.

Various software is freely available that can send and receive Hellschreiber, using any Windows font. Specially designed fonts are available. One called "FeldReal.fon" claims to use the original Hellschreiber character design but I am not convinced – if you are interested, look for example, at the K. FeldReal.fon's K actually looks nicer, but it doesn't quite match the one in the machine, look at the top right of the K.

3.5 DX Hellschreiber



```
[01.0 10,140,050  
DX Hell 01234567
```

As usual, the display shows the band, mode, frequency and the message scrolls to the left as it is sent.

The screenshot fragment below is from IZ8BLY's excellent Hellschreiber receiving (and sending) software.



```
0123456789ABCDEFGHIJKLMN OPQRSTUVWXYZ  
0123456789ABCDEFGHIJKLMN OPQRSTUVWXYZ
```

So-called DX Hellschreiber is the same as ordinary Hellschreiber described above, except that every column is sent twice. The characters are therefore twice as wide, the message takes twice as long to send, but it has the advantage of potentially being more readable in weak conditions.

3.6 Slow Hellshreiber



As usual, the display shows the band, mode, frequency and the message scrolls to the left as it is sent.

Slow Hellschreiber is the slow-signal Hellschreiber equivalent. Each Hellschreiber letter row is shifted slightly in frequency. Typically the single pixel rate is very slow, for example 1 second per pixel (0.5 seconds per half-pixel). The character pattern is “scanned” one column at a time from bottom to top, shifting the frequency as the row increases up the character. In this way an image of the character is built up at the receiving station.

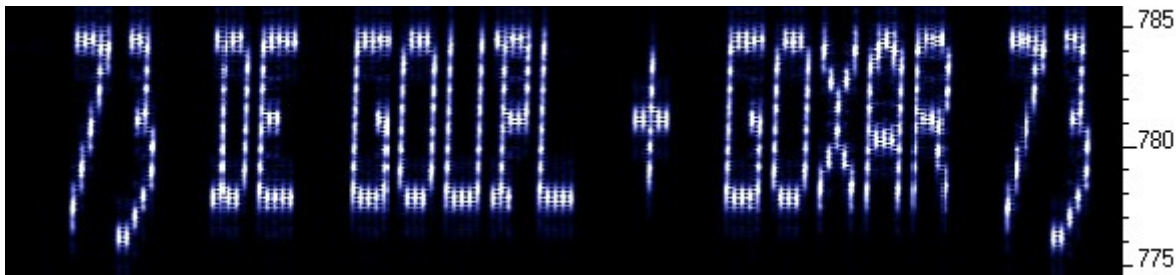
In Slow Hellshreiber mode, certain configuration settings in the kit require special attention:

Speed: The speed setting is the number of seconds required to transmit one whole character. Recall that a Hell character is composed of 7 rows (14 half-rows) and 5 columns; there is also one empty column as an inter-character space. Therefore each character is composed of 42 “pixels”. Therefore if you want the transmission time to be 1 second per pixel, set Speed to 042. If you wanted 1.5 seconds per pixel, you would set Speed to 063, and so on.

FSK (Hz): The FSK size configuration specifies the height of each character, it is the number of Hz for 5 rows of the character. Recall that most Hell characters, such as the letters, fit on a 7-column, 5-row grid. FSK (Hz) specifies the size of that grid; some of the numbers extend above or below the grid. For example an FSK (Hz) setting of 05 would result in characters 5Hz high, i.e. 1Hz per row (pixel).

Be aware of fundamental limitations of information theory. If the pixel rate is 1 second (Speed = 042), the minimum theoretical bandwidth is 1Hz. Therefore choosing a pixel size of less than 1Hz, i.e. FSK (Hz) = 05, does not make any sense. Faster transmissions require larger bandwidth, and you will have to set the FSK size higher to match. If you do not, the image at the receiving end will be blurred.

This example image was taken in Argo, in its 10 second “slow” mode. The message is “73 DE G0UPL + G0XAR”, the Speed is 042, and FSK (Hz) is 08. Note that even here, the characters start to look slightly blurred – a consequence of the fourier transform and minimum bandwidth, because the bucket size in Argo's 10 second mode is well under 1Hz so the 1Hz.



The following image shows part of the same thing in Argo's 3 second “slow” mode. The larger fourier transform bucket size means the image is more clear, but the faster scroll rate makes the letter's height to width ratio somewhat less attractive. Other slow-speed fourier transform software present more configuration options and may be more suited for slow-Hellshreiber reception than Argo.



3.7 CW



```
[01]-0 10,106,000  
CW12 CQ DE G0UPL
```

CW mode is just plain, ordinary on/off keyed CW (morse code) at ordinary speeds. The display's top line shows the sequence number, band and frequency, exactly as in the editing screen. In this example, it is sequence 0, band 0 and 10,140,050Hz. The bottom line shows CW followed by the speed – in this example 12 wpm. Finally the message is shown. The leftmost character is the one currently being sent. “-“ after the sequence number, in the 4'th character of the top row, indicates a dash is being sent. Naturally a “.” will appear if a dit is being sent. As the transmission is sent, the message will scroll to the left.

In CW mode, the Speed setting is the words-per-minute speed, e.g. 012 for 12 wpm.

Have you ever spent a lazy Sunday afternoon calling CQ on 80m CW with QRP power, with no luck? Why not use the kit as a CQ machine, and take the hard work out of calling CQ! In AF output mode, the AF output could be rectified and used to key a CW transmitter, with the Frame setting used to control how often the CQ message would be transmitted.

3.8 CW ID



```
[01].0 10,140,050  
CW ID G0UPL
```

The CW ID mode can be used for transmitting your callsign identification periodically if you wish, if you think that it helps you to comply with licensing conditions.

This mode is similar to “CW”, it is just ordinary on/off keyed CW. However, instead of transmitting the contents of the “Message” setting, it simply transmits the “Callsign” configuration parameter. Additionally, the speed is always 12 wpm, it ignores the “Speed” setting.

Note that if a mode setting is set to CW ID, the Callsign parameter must not be left empty, and you must enter a valid Callsign parameter for CW, containing only characters A-Z, 0-9, Space or /. An empty Callsign or invalid character in the Callsign will result in an error message.

3.9 FSK



```
[01]-0 28,132,000  
FSK12 CQ DE G0UP
```

This mode is designed for wideband fast FSK. It is in common use for 10m beacons using FSK shifts of several hundred Hz. The speed setting is interpreted as a words-per-minute speed, e.g. enter 012 for 12 words-per-minute.

3.10 Transmit



```
[0] 0 14,060,000  
TX
```

Here the kit can be used as a basic CW transmitter. The frequency is set by “Freq. 0”. You can connect a straight morse key across the right button, for keying the transmitter.

3.11 Tune

In any mode when in the “waiting” state, waiting for the next transmission frame to begin (i.e. the “Frame” parameter is non-zero), pressing the right button keys the transmitter. This can be used for antenna tuning.

Note that if the right button is pressed during calibration (when using a GPS for frequency calibration, and the GPS mode is therefore set to a non-zero value), then the calibration will be cancelled. The reference frequency setting will be restored to the previously stored value in the EEPROM.

3.12 WSPR



```
[0] 0 10,140,200  
WSPR 23 137 2
```

The WSPR mode display is composed of several elements. Given the example display above:

0

The transmission sequence number

0

The band number (when the relay-switched LPF kit is used)

10,140,200

Example transmission frequency: this is the WSPR centre frequency, not base.

WSPR

The mode being used!

23

Transmission power setting, in dBm

137

Symbol number currently being sent; WSPR messages are 162 symbols

2

Tone currently being sent – WSPR messages are made of four tones, 0 – 3.

WSPR stands for Weak Signal Propagation Reporter. The message consists of three parts: the operator's callsign, Maidenhead locator (4-character, e.g. IO90) and two digits specifying the power. At the receiving station, messages are decoded and uploaded to a central internet database.

The WSPR message is encoded into a set of 162 symbols, each may be 0, 1, 2 or 3, using a compressed data format with forward error correction. The symbols are transmitted as tones, each tone separated by 12,000 / 8,192 Hz i.e. approximately 1.46Hz. The duration of each symbol is the reciprocal of the tone spacing, which is approximately 0.683 seconds. WSPR messages take about 110.6 seconds to transmit, and always start at even minutes past the hour.

While a WSPR transmission is in progress, the “WSPR” text shown in the above example screenshot will change intermittently to the 4-character Maidenhead locator being transmitted. This can be useful during mobile operation if a GPS receiver is used, since the WSPR message is dynamically encoded with the fresh location data from the GPS unit, and the display will show the actual transmitted locator for the current location.

In WSPR, timing is critical, so when using WSPR you must set the time configuration parameter as exactly as possible. Be sure to keep the rightmost flashing 1-minute digit, watch your clock until the seconds turn over to 00, and then press the left button. This will ensure the seconds are in sync with your real clock time. If careful attention is given to setting the frequency and the real time clock, then successful WSPR reports will be obtained. Of course these things are easier if you are using a GPS module: the Maidenhead locator will be calculated from the received latitude and longitude, and the time decoded nicely from the GPS serial data stream.

The microcontroller in this kit takes care of the WSPR message encoding algorithm, without any assistance from a PC host computer. It also calculates the tone spacing and symbol duration.

Note that the WSPR message is re-calculated at every transmission frame in the sequence, since each frame contains its own power setting. This allows the kit to be used to transmit a series of different powers, if external attenuators are connected, for comparison purposes.

In between message transmissions, the display will show instead just a clock (see below), while we wait patiently for the next WSPR transmission to begin, according to the settings of the configuration parameters Frame and Start. This is useful for checking that the time on your kit is accurately set. The display also shows the minute at which the next frame will start transmitting. In the example below, the time is 13:04:53 and the next frame will start at 13:10:00.



During calibration, the bottom line will additionally show a status bar indicating the progress of the calibration.

On Argo, WSPR messages look ugly, like this local reception copy (or worse, because you probably are over-driving your receiver when receiving your own signal!):

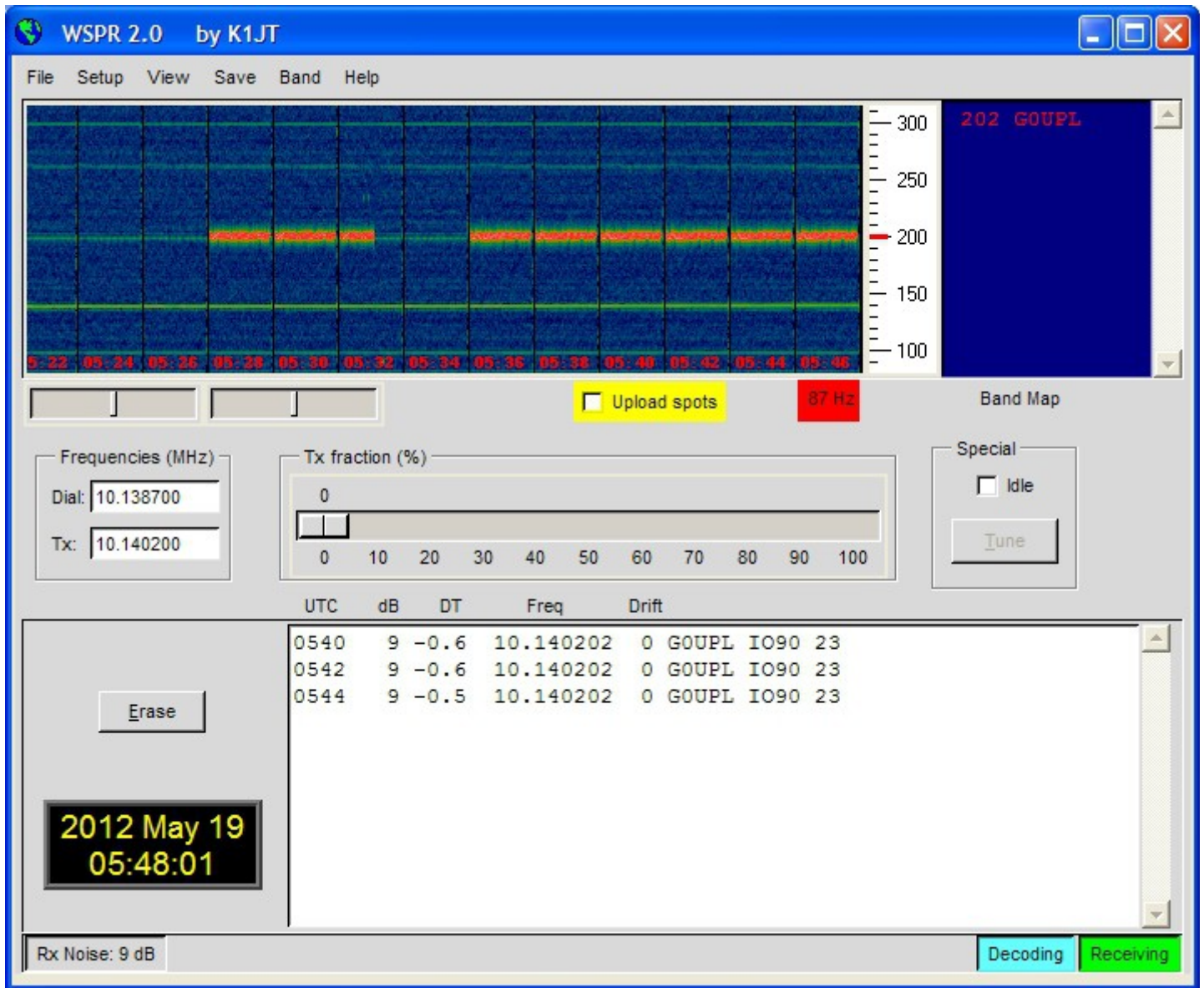


WSPR transmission standard frequencies:

Choose a transmission frequency somewhere in the 200Hz-wide standard WSPR bands:

2200m:	0.137400 – 0.137600	30m:	10.140100 – 10.140300
600m:	0.475600 – 0.475800	20m:	14.097000 – 14.097200
160m:	1.838000 – 1.838200	17m:	18.106000 – 18.106200
80m:	3.594000 – 3.594200	15m:	21.096000 – 21.096200
60m:	5.288600 – 5.288800	12m:	24.926000 – 24.926200
40m:	7.040000 – 7.040200	10m:	28.126000 – 28.126200

WSPR decoding takes place in the WSPR program by K1JT (see <http://physics.princeton.edu/pulsar/K1JT/wspr.html>). Below is a screenshot showing the WSPR 2.0 screen following reception of a few transmissions (output frequency = 1,500Hz, Frame = 02, Start = 00).



3.13 WSPR-15

```
[01 0 10,140,200
WSPR15 23 137 2
```

WSPR-15 is a relatively new experimental mode that is a variation of the common WSPR mode. It is used on the LF bands where the higher signal-to-noise ratio it offers is advantageous. WSPR-15 uses the same encoding algorithms as WSPR, but the tone spacing is 8 times closer (approximately 0.18Hz) and the speed is also 8 times slower.

In WSPR-15, the Frame parameter must be a non-zero multiple of 15 minutes, and the Start parameter must be zero (usually) or a multiple of 15 minutes.

4. Customised message patterns

The kit has the ability to produce customised message patterns in the FSKCW mode. To enter or leave custom mode, a * character is inserted in the message. The first two characters after the * character specify the symbol duration of each symbol, in seconds. Subsequent characters specify the frequency shift of each symbol one by one, in units of 0.5Hz. For example, 5 means a shift of 2.5Hz. After the numbers, you can continue with letters. So A would mean a shift of 5Hz, B a shift of 5.5Hz, C a shift of 6Hz, and so on. For example consider the following message:



The callsign G0UPL is sent in ordinary FSK/CW with height and speed according to the configuration settings. Next comes a custom message, the duration of each symbol is 03 seconds. The shifts are 1, 2, 3, 4Hz respectively. On Argo, this message produces (with kit configuration FSK (Hz) = 04, Speed = 003):



As an example of what kinds of patterns can be produced, the pattern below is created using message *01ACDFGIJJKKKJJIGFDCA87542110001124578*



5. Factory Reset

On powering up the kit, a message is shown for a few seconds on the LCD, which indicates the version number. If the Right button is pressed during the display of this splash screen message, then a confirmation message appears saying "Reset? Sure? Press left btn". Now if you press the left button, the chip EEPROM contents are erased and returned to the original factory settings.

The effect of this feature is to entirely return the microcontroller chip to its original settings, it is the same as buying a new chip and inserting it. All calibration settings, message, frequency, etc. are erased and returned to the default settings.

6. Signal-generator mode

Another use of this kit, is as an accurate, stable signal generator. If you set the kit in the FSKCW mode, and set the FSK to 0 Hz, then whatever message you've entered, the output will always just be a single un-modulated signal at the chosen frequency.

7. Resources

Please see the kit page <http://www.hanssummers.com/qrssultimate3> for any information on latest updates and issues.

Use the QRSS Knights mailing list: http://cnts.be/mailman/listinfo/knightsqrss_cnts.be to announce your operation.

You should get reception reports by email and see your signals on the various online “grabbers” (see <http://digilander.libero.it/i2ndt/grabber/grabber-compendium.htm> for a set of links to “grabbers” worldwide).

Please join the Yahoo group <http://groups.yahoo.com/group/qrplabs/> to for new kit announcements, to discuss any problems with the kit, enhancements you’ve made, or just to tell everyone how much fun you’re having.

For general information and more QRSS projects, links to other QRSS resources etc., see <http://www.hanssummers.com>.

Argo QRSS decoding software by Alberto I2PHD: <http://www.weaksignals.com/>

WSPR network home page: <http://wspnet.org>

Analog Devices DDS information: <http://www.analog.com/en/rfif-components/direct-digital-synthesis-dds/products/index.html>

8 Version History

1 14-Oct-2013

- Initial draft version, for firmware version v3.00

2 07-Dec-2013

- Firmware version v3.01
- Introduces new Cal Time and Cal HP settings, with a new “Huff Puff” GPS calibration mode
- Offset in Park Mode 1 is now in multiples of 32x the minimum frequency step of the DDS

3 14-Jan-2014

- Firmware version v3.02
- Introduces 16 transmission settings, each with their own mode, frequency, power, band
- Support for the relay-switched low pass filter board kit
- Support for “auxiliary” output, to control other relays or external circuits e.g. switched attenuators
- Several pairs of related configuration parameters are now shared into one screen
- Added new animation that is displayed during frequency calibration
- Bug fix: factory reset had moved to the left button. It is now correctly back on the right button.
- Bug fix: factory reset left all mode settings blank, rather than “None”

4 14-Jan-2014

- Change example WSPR tx freq from 10,140,150 to 10,140,200.

5

05-Mar-2014

- Firmware version v3.03
- New enable/disable for each of the transmission mode settings. When disabled, looks “crossed out”
- Mode 0 no longer needs to be populated with valid data – any mode settings can be empty if they are disabled
- Heartbeat always flashes on for 0.25s in sync with the detected 1pps event, even during calibration
- Calibration progress is now indicated by a status bar animation
- The error check now checks all of the enabled mode settings [0] to [F]
- The Aux setting is now re-enabled
- Bug fix: No Hell mode message error, if Hell modes are used in mode settings other than [0]

6

02-June-2014

- Firmware version v3.04
- Improve accuracy of wspr tone spacing: was 1.43, now 1.46Hz
- Toggle back and forth between "WSPR" and locator, in WSPR mode run display; show each for 3 tones' duration
- Forces CalTime to 10 if in non-HP calibrate mode
- Limits CalTime at 250 seconds maximum
- WSPR freq is now the centre freq, not baseline (i.e. base frequency is 2.2Hz lower than U3 set/displayed frequency)
- Put back "relay chatter", i.e. don't lock relay closed, on "Tune" (leave lock-on feature for TX to stop relay chatter)
- Factory reset check, "Reset? Sure? Press left btn!" to prevent accidental reset
- Allow blank locator when GPS enabled; the sytem waits indefinitely for a valid locator to be set
- Bug fix: pressing left button in message edit, on the first blank character, entered a Null not a space
- Bug fix: if the callsign was incorrect for WSPR, it reported it as a frequency error